

1 **SMOOTH STUCCO FINISH**  
**DRYVIT - SLIM**  
**FINESSE 310ST CHINA WHITE**



2 **SMOOTH STUCCO FINISH**  
**DRYVIT - SLIM**  
**FINESSE 105ST SUEDE**



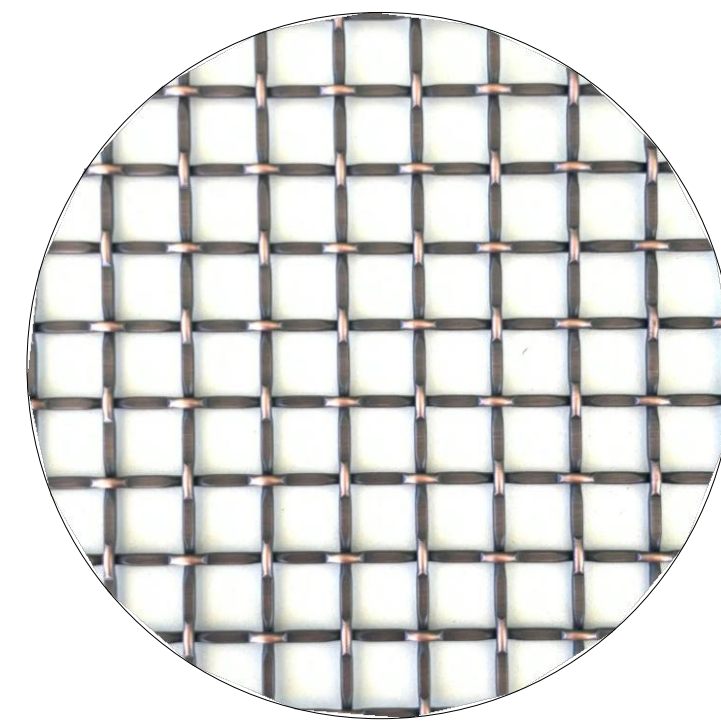
3 **WOOD-POLYPROPYLENE COMPOSITE**  
**KNOTWOOD - FRENCH WALNUT**



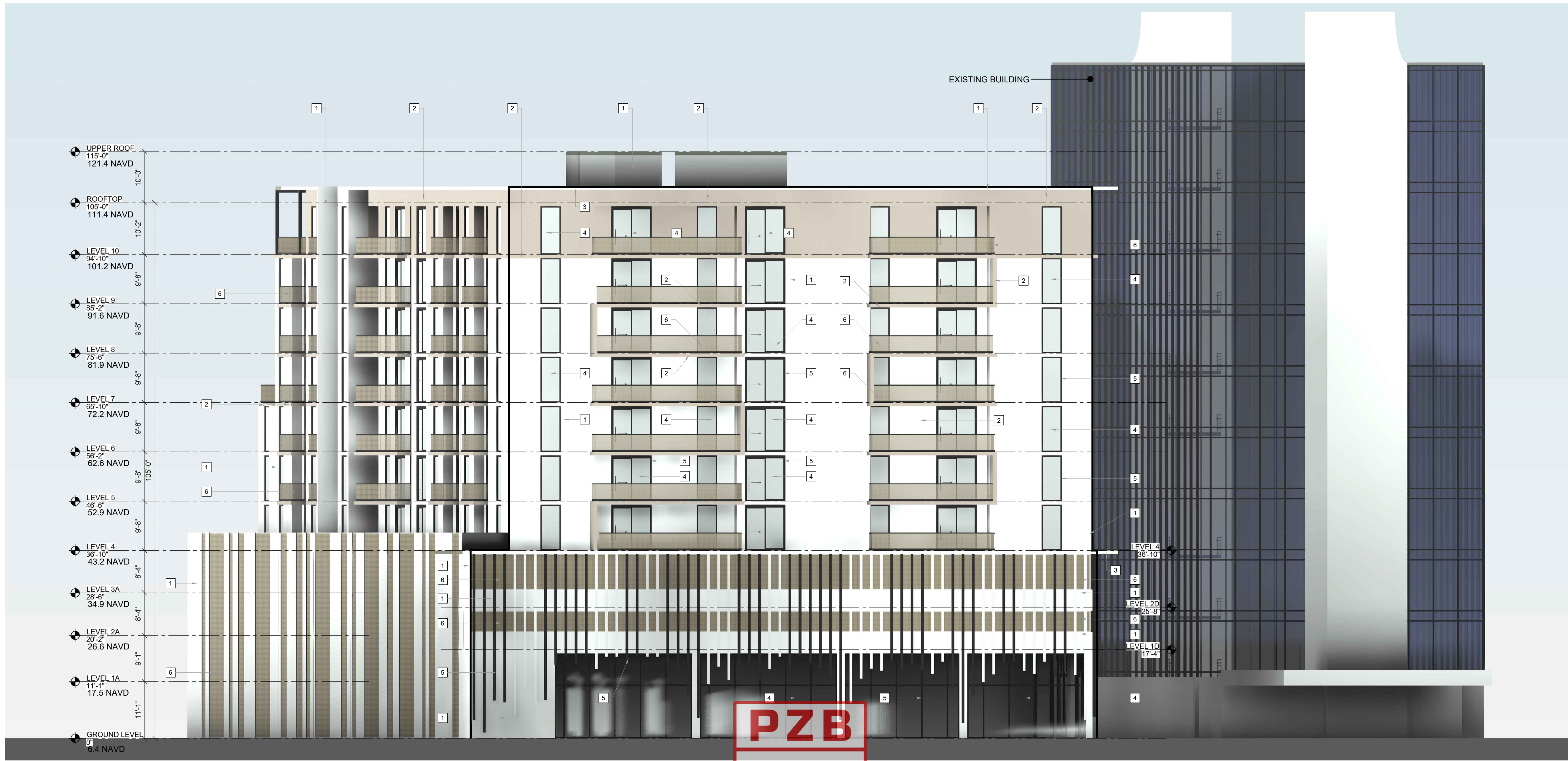
4 **TINTED GLASS FOR STOREFRONTS,**  
**WINDOWS, BALCONY DOORS**  
**VIRACON - 9/16" VLE24**  
**- 47 LAMINATED HS/HS**



5 **ALUMINUM FRAME**  
**FOR STOREFRONTS & WINDOW**  
**BENJAMIN MOORE**  
**2134-30 IRON MOUNTAIN**

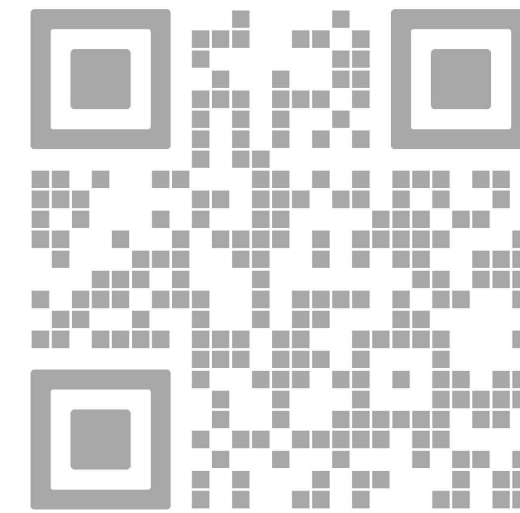


6 **METAL MESH RAILING**  
**& PARKING GARAGE SCREENING**  
**BRUSHED OIL BRONZE**



**PZB**  
PZ24- 12000027  
12/17/2025

01 WEST ELEVATION  
A-503 SCALE: 1/4"= 40'-0"



REV.	DATE	DESCRIPTION
01	05-13-2025	DRC SUBMITTAL

ALL MEASUREMENTS MUST BE VERIFIED BEFORE  
BEGINNING THE WORKS. NO MEASUREMENTS ARE TO  
BE SCALED DIRECTLY FROM THIS DRAWING.

Key section

Client  
**VERA FUND**  
NICK POLYUSHKIN  
& YURI KHARITONENKOV  
TEL: 305.833.3303

Project  
**1600 S FEDERAL HIGHWAY**  
**(MIXED-USE PROJECT)**  
1600 SOUTH FEDERAL HIGHWAY,  
POMPAHO BEACH, FL 33062

Title  
**WEST ELEVATION**

Drawn  
J. WU  
Verified  
N. TREMBLAY  
Approved  
S. L'ECUYER  
Date  
08-15-2025

Project  
PZ24- 12000027  
11/19/2025  
Dwg. no.  
24-838  
**A-503**